

LCC Modelling System

B 00-29 North light style engine shed

All drawings are not in scale.

LCC Modelling System is flexible and you can make easy modification. Please visit our website at www.lcut.co.uk to shop for additional LCC elements.

Footprint:

Width: 139mm

Height: 95mm

Length: 258mm

- Bundle contains:
- 1x LCC 00-00
- 1x LCC 00-01
- 1x LCC 00-02
- 2x LCC 04-08
- 2x LCC 04-09
- 4x LCC 04-10
- 8x LCC 04-11
- 2x LCC 04-12
- 10x LCC 04-52
- 2x LCC 04-56
- 1x LCC 04-59
- 4x LCC 04-103
- 5x LCC 04-104L
- 5x LCC 04-104R
- 5x LCC 04-105L
- 5x LCC 04-105R
- 20x LCC 04-106
- 5x LCC 04-107
- 1x LCC 04-107A
- 10x LCC 04-108

! We recommend PVA or any other paper/wood glue for the main fibre board parts .

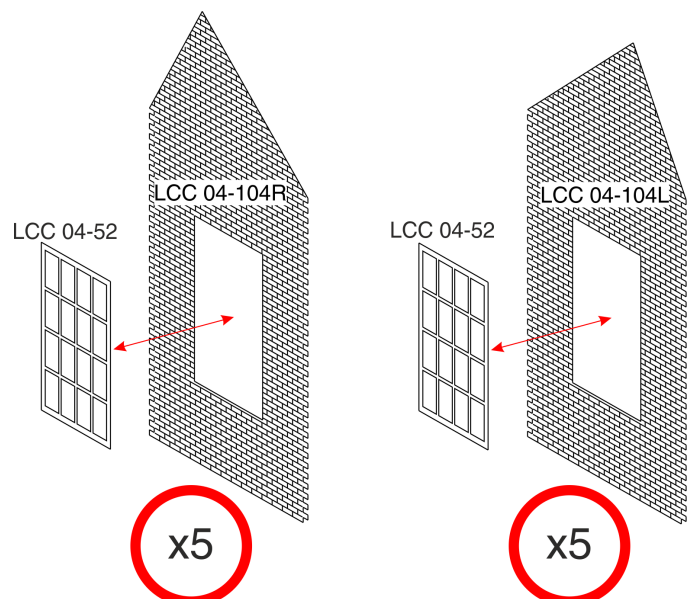
Painting recommendation:

We recommend using acrylic paints. There is no need to undercoat the surface but it can be done if desired. The material used is porous and relatively forgiving, heavy coats are unlikely to flood the brickwork.

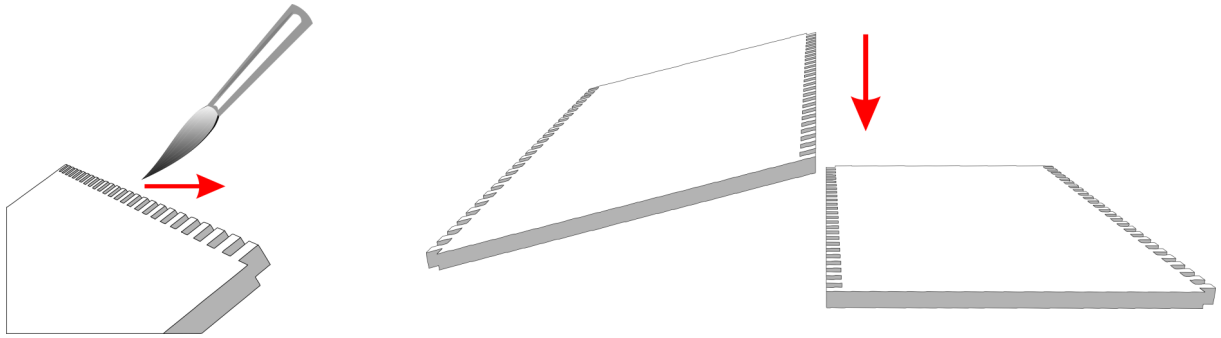
WALL PANELS

Start by cutting out all LCC 04-52 windows and cutting away nameplates from LCC 04-104R and LCC 04-104L. Do not cut out the window sills from LCC 04-52 yet. Not gluing the sills will make it easier to connect the wall elements as there will be nothing protruding and the parts can be laid flat on a surface.

Glue all LCC 04-52 windows into wall panels flush with the back of the panel.



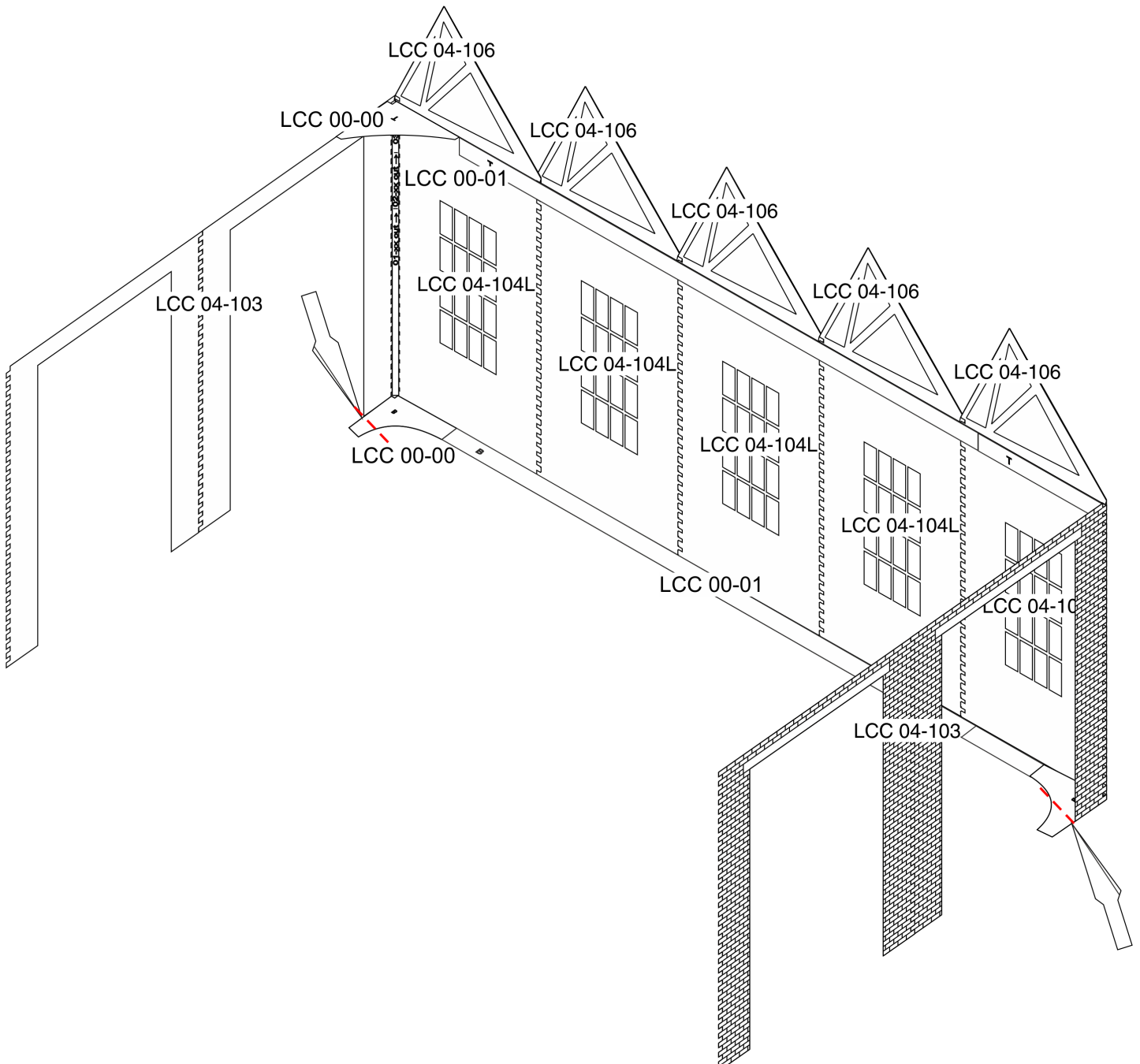
CONNECTING WALL ELEMENTS



Recommended way of gluing parts together is to apply PVA glue to the interlocking bricks working from back of the part to the front. This ensures there will be no glue overflow on the front, visible side.

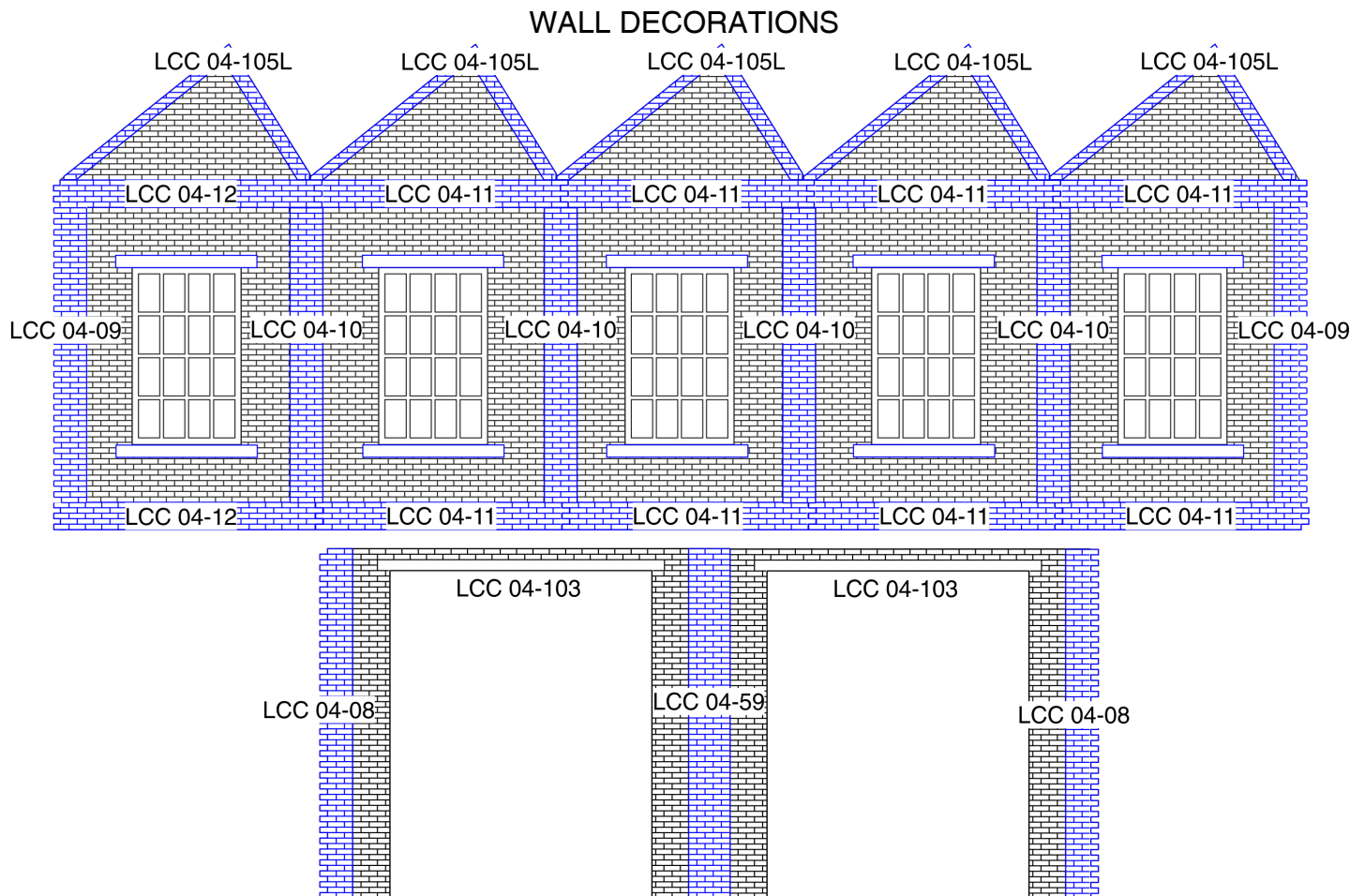
Then lay the part without glue on flat surface laying on its front (engraved side). Press the part with glue onto the part without glue. Gently push parts together from sides to close the gap. It is recommended to start the assembly by gluing all of the side elevation panels.

MAIN CONSTRUCTION



MAIN CONSTRUCTION—CONTINUED

Start the main building construction by gluing all of the side elevations first (LCC 104L and LCC 104R). Glue the entrance panels to the side elevations (LCC 04-103). Using the LCC 00-00 corner support kit reinforce the corners. We recommend to use the thin strip provided as shown on the diagram but it is not mandatory. Corner supports can also be skipped but care should be taken with the building afterwards. Glue the LCC 04-106 roof struts to the back of LCC 04-104L and LCC 04-107R flush with the top of the wall panels. Using LCC 00-01 wall supports strips reinforce the walls of the building. Glue the thinner strip marked “T” to the top of the wall panels just below LCC 04-106. Glue the thicker strip marked “B” flush with the bottom of the wall and perpendicular to it.

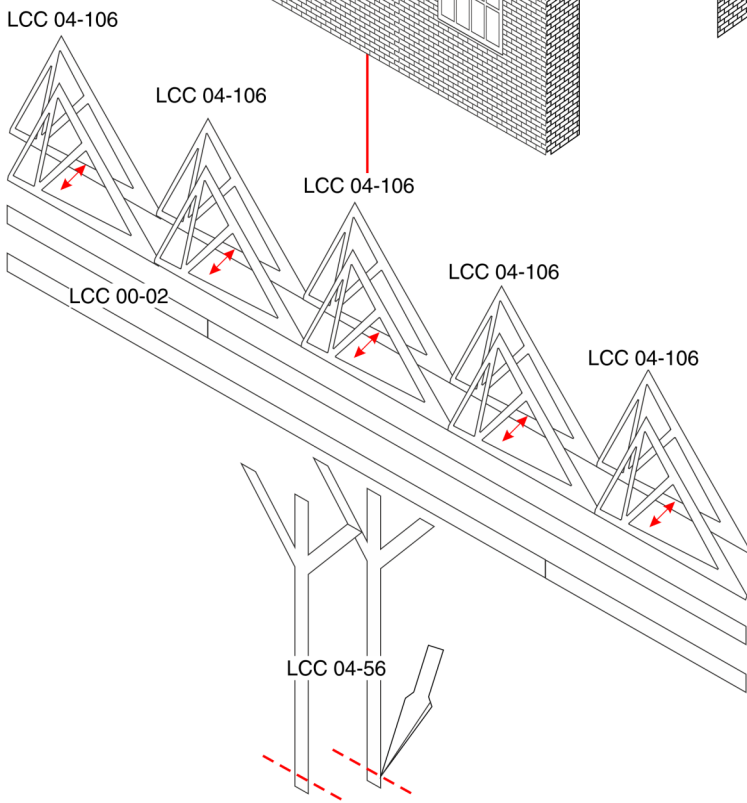
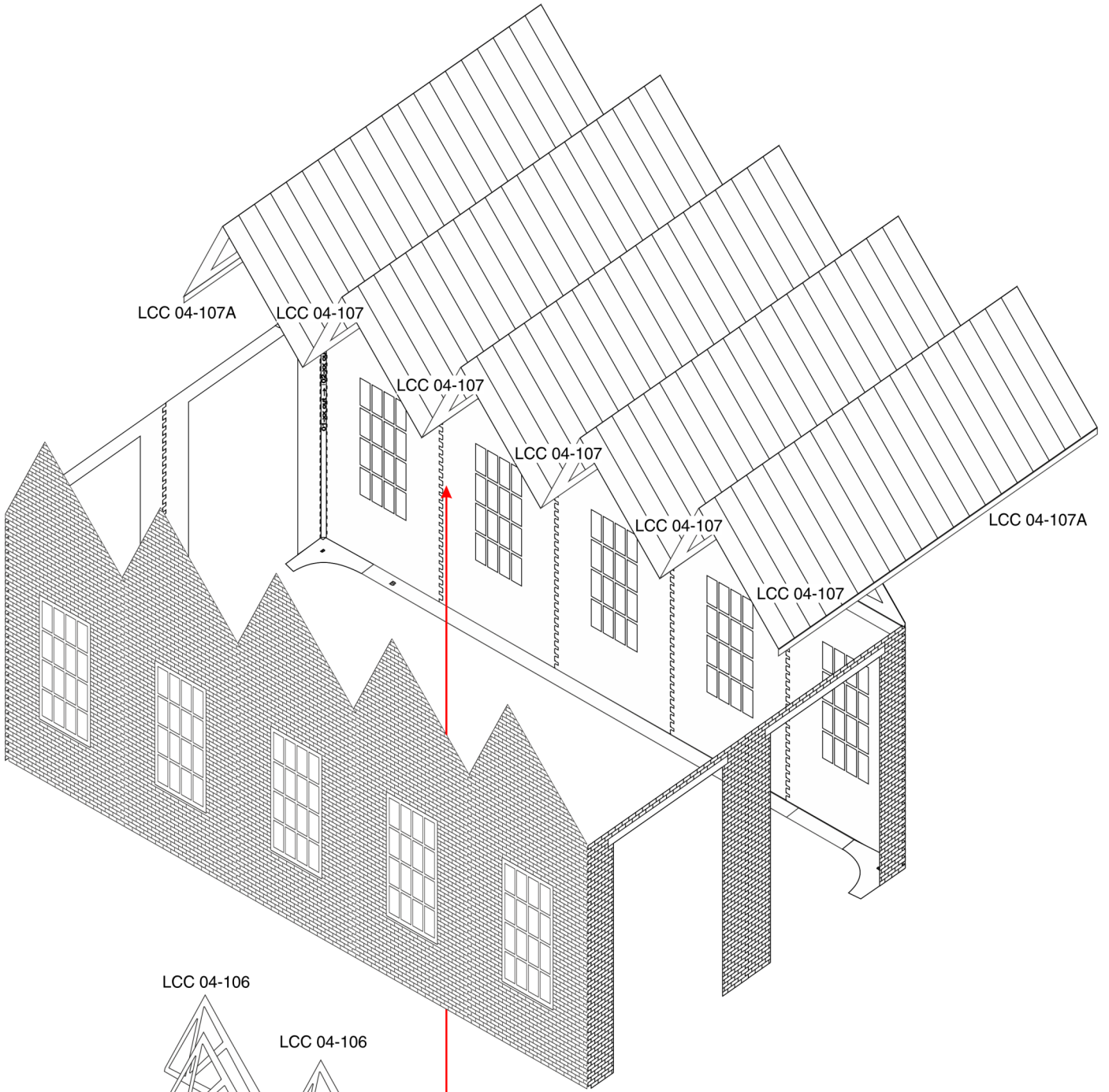


Using the diagram above glue all of the decoration parts to the walls. Note that LCC 04-105L should be glued to LCC 04-104L and LCC 04-105R should be glued to 04-104R.

Start by gluing all of the LCC 04-105L and LCC 04-105R to their respective wall elements. Glue LCC 04-12 in one of the corners of the side elevation (it can be either right or left as long as they are present somewhere in the line). Fill the rest with LCC 04-11. Glue LCC 04-09 to the side of the side elevation with about half a brick protruding. Glue LCC 04-10 in the middle of the seams between side elevation panels. Glue the window sills from LCC 04-52 just below and just above the window openings.

Glue LCC 04-59 in the middle of the seam between LCC 04-103. Glue LCC 04-08 to the sides of the entrance elevation with about half a brick protruding.

ROOF



ROOF-CONTINUED

After all of the elevation decorations are glued in place start the roof assembly by gluing provided LCC 04-56 together with the identification inscription in the middle. LCC 04-56 will have to be trimmed to height but before construct a beam using LCC 00-02 strips. Glue the strips wider face with each other. Leave to side for now.

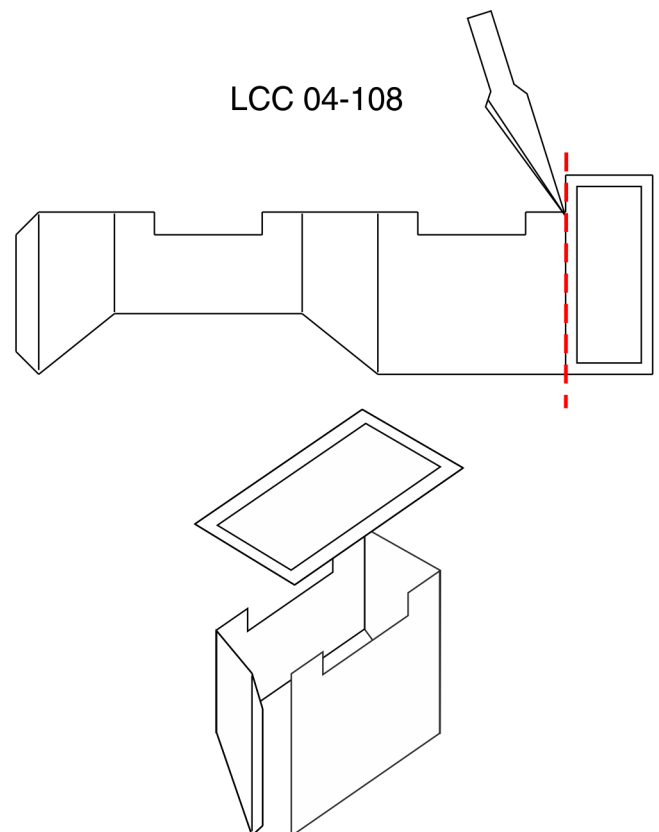
Fold the roof panels LCC 04-107 along the engraved line. Help yourself with a ruler or other rigid and straight object to obtain a clean bend. Bending by hand is not recommended. Avoid using the part with cut-outs as a leverage to bend the part. Take two LCC 04-106 and glue them together. Take the doubled up roof strut and then glue it in to the inner corner of LCC 04-107 roof panel. Use the vertical markings on the roof surface to position the strut in the middle of the roof panel. Finally glue the roof panel with struts to the top of the building. We recommend to dry fit the roof panels first for practice. Make sure that the roof panel is sitting correctly on the tooth of each side elevation panel. Also make sure that the edges of the roof panel are flush with the side elevation. After all of the roof panels are in place use LCC 04-107A to mask the gaps at both ends of the roof. Finally take the prepared roof beam and roof support (LCC 00-02 and LCC 04-56) and coming from the bottom of the building glue them in along the line of middle roof struts. Dry fit LCC 04-56 before gluing it in and trim to length (about 3mm).

VENTILATION

Cut away the rectangular part of LCC 04-108 as shown on the picture. Fold the ventilation along the score marks. Use the tab provided to glue the ventilation into a rectangular shape. Glue the piece that was cut away to the top of the ventilation with the engraving down (optionally with the engraving up).

ON NEXT PAGE:

Glue the ventilations to the sides of the roof without window cutaways.



VENTILATION-CONTINUED

